



CKD

Towards a true Global company that the future needs

In 2016, CKD created a 10-year vision in response to market environments that are set to change significantly. Looking ahead 10 years, we are embarking on a journey as a pioneer in automation with the aim of becoming a “Total FA Worldwide Supplier”. Our determination will allow us to expand into uncharted territories and to further contribute to the Global society and make it a sustainable one.

For our 10-year vision, which is based on three key policies: to evolving our products from being the best in Japan to globally recognized products, to challenging new fields and markets, and to expanding our business base, we will continue to boldly challenge higher goals and demonstrate the new values created to the rest of the world.

Corporate Philosophy

With creative knowledge and technology,
We shall innovate fluid control and automation,
Thus contribute to build rich society.

Corporate Commitment

1. Recognition of Corporate Social Responsibility
2. Care for Global Environment
3. Thorough Customer Orientation
4. Challenge to Technology Innovation
5. Corporate Culture with Faith in Human Resource

Conduct Guidelines

1. Awareness of social responsibility
2. Sincere and fair conduct
3. Observation of the law
4. Disclosure of information
5. Environmental preservation
6. Customer orientation
7. Challenging technical development
8. Enhancing the human resources
9. Appropriate execution and reformation of business
10. Exertion of organizational strength

GO CKD!

“Total FA Worldwide Supplier”

- Contributing to an affluent society
- Meeting the expectations of shareholders
- Caring for employees and their families

2025

2019~2021

New medium-term management plan

Build-up CKD 2021

1. Evolving our products from being the best in Japan to globally recognized products
2. Challenging new fields and markets
3. Expanding our business base

2016~2018

Medium-term management plan

Challenge CKD 2018

2013~2015

Medium-term management plan

GLOBAL CKD 2015



President

Kazunori Kajimoto

Kazunori Kajimoto



1943: Established Japan Aircraft Electric Co., Ltd.



1947: Our first automated machinery began manufacturing “Vacuum tube manufacturing equipment.”



1956: Started the mass-production of component products.



1984: Established the first overseas subsidiary in Malaysia.



2012: Changed the company name to “CKD Corporation.”

Three strengths that
CKD
has because of its long-
standing history

01

Wide range of products that meet needs

An extensive product lineup supports manufacturing activities around the world.

02

Evolving technology

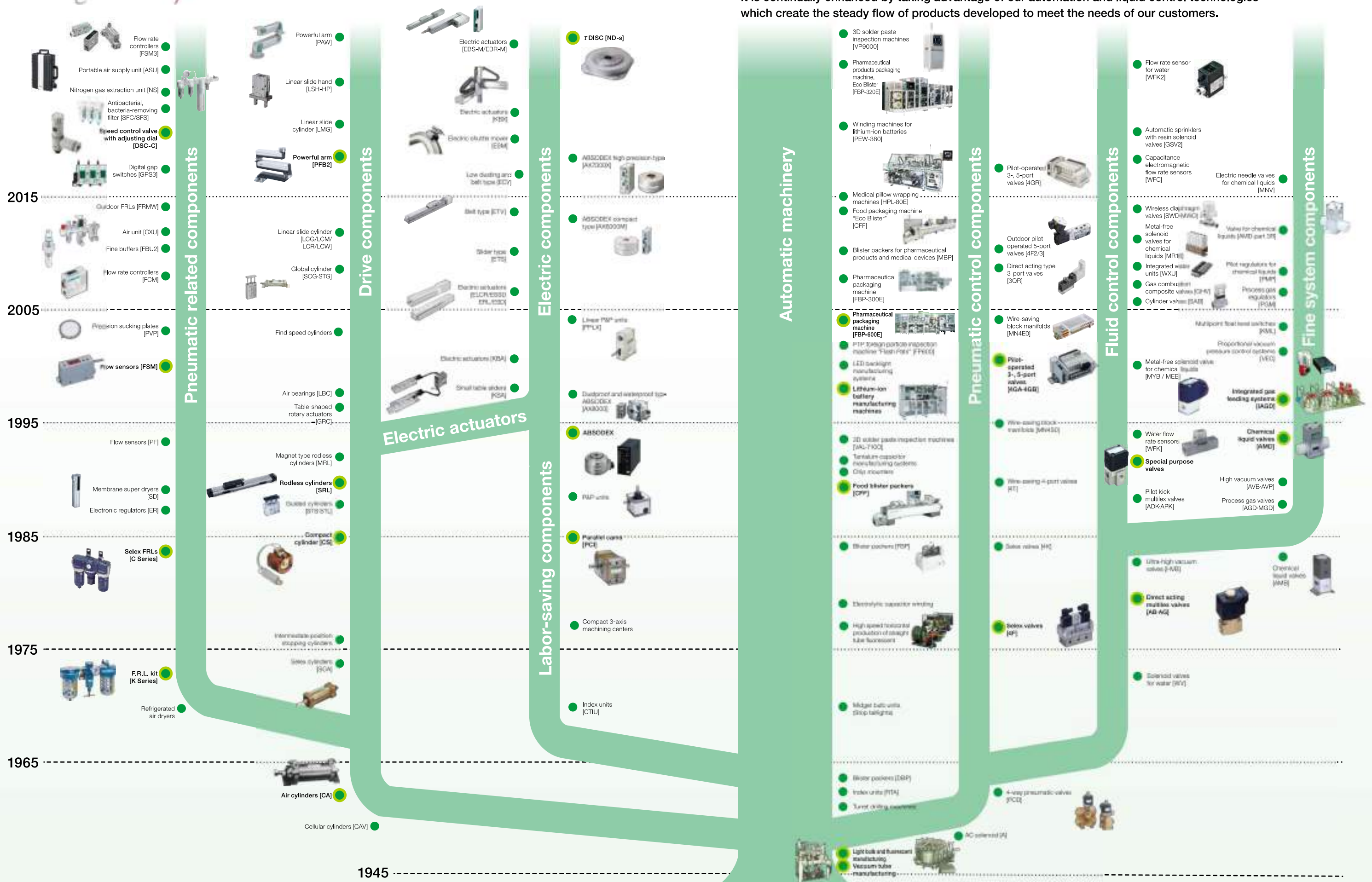
Develop new products with a wide range of technologies.

03

CKD global network

Establish a production and sales system that contributes to customers all over the world.

Wide range of products that meet the needs



With the growth of our product lineup, CKD is contributing to helping manufacturing businesses around the world.

We are proud of our rich product portfolio that covers all fields with over 500,000 products supporting manufacturing sites all over the world.

It is continually enhanced by taking advantage of our automation and liquid control technologies which create the steady flow of products developed to meet the needs of our customers.

Our strengths 02

Our technical capabilities are continuously evolving.

A broad range of technologies supports the entire process from development to quality assurance across diverse industrial fields.

Since its establishment, CKD has continually identified the needs of the age faster than any other company as a pioneer of automation technology. We have researched and developed a wide range of products from two different perspectives: Automatic machinery and component products. The technology has been handed down and improved with the times.

Towards a Total FA Worldwide Supplier

Automatic machinery

Component products

CKD's broad range of technologies

CKD is proud of its rich product lineup.

A wide range of diversified technologies support those products across many industrial fields.

We aim to be a Total FA Worldwide Supplier by continuously integrating and improving our proprietary technologies for individual component products.

Image inspection technology

CKD's automated machineries are equipped with our proprietary image inspection technology. For example, with pharmaceutical products packaging inspection and 3D solder paste inspection for printed circuit boards, this technology improves quality and fully automates processes with fast and reliable fault detecting functions.

Film forming technology

Various forms of film containers can be molded spanning a broad range of products from pharmaceutical, food, etc. From the forming to the final punching out of the container is done in one process, products are packaged in an extremely hygienic environment.

Glass processing technology

We have profound knowledge of glass processing, such as, shape processing suitable for glass characteristics and glass-to-metal seals. Our technology allows high quality processing for many different lighting apparatuses including automotive, special purpose lamps, etc.

Machine control technology

Our machine control technology supports automation and contributes to high speed and accurate automated systems, e.g., electrode winding of lithium-ion batteries and system synchronization of film packaging.

Integration of electric power and air in drive components

To respond to many different applications of automation, we have control technologies that use electric power and air. We provide automation appropriate to customer needs via a rich product lineup based on our high technological capabilities.

Fluid control technology

With our vast lineup of component products that optimally control a wide range of fluids from water to air, gas, steam, oil, etc., we cater to customers' needs.

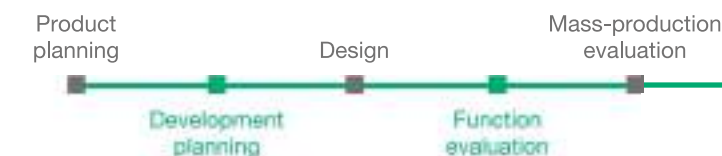
Technology for microminiaturization of semiconductor devices

The fluid control components incorporated in semiconductor manufacturing equipment are manufactured in clean rooms that meet equipment requirements. Furthermore, we continue to develop technologies responding to miniaturization applications.

Technologies for individual manufacturing processes

Our FP Series for food manufacturing processes, W Series for Outdoor use, P4 Series for Rechargeable battery manufacturing processes, G Series for Welding processes, etc., thoroughly support diversified operating environments.

[CKD development process]



Unique approach to development

Development project system

In new product development, specialists from concerned departments gather and work as a team. We have improved the quality of our development operations by assigning dedicated staff members with different expertise.



Modularization and systematization

To be able to meet the delivery needs of our customers, the automated machinery are modularized, and to be space-saving with high performance, components products are integrated and systemized. CKD's core technologies are supplied to our customers.



Contribution to smart factories

We develop telecommunication, sensors and failure prediction products on a timely basis that have become required due to the proliferation of IoT. We support the enhancement of pre-maintenance management.



Quality assurance

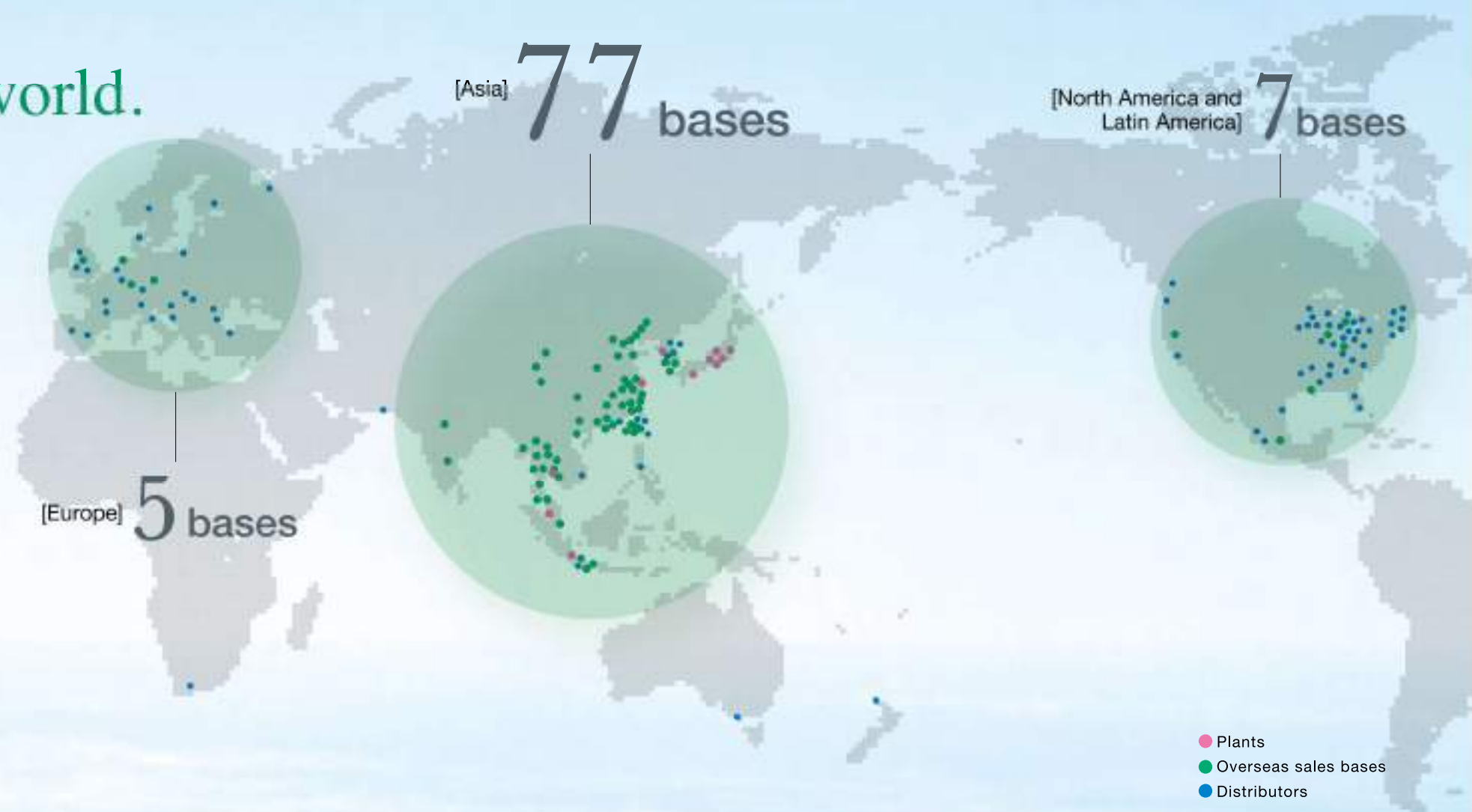
To keep quality high during the development process, we evaluate and record quality in each phase of a given project. With a thorough quality management system based on quality engineering, we can also respond to customer needs for quality.



CKD's network spans the world.

Production and sales network for global satisfaction

To deliver optimal products, technologies and services to customers rapidly and surely, we have a network of bases encompassing not only Japan but also Europe, North America, Latin America and Asia. We build close relationships with customers across the globe and provide them with the strong support they want and need.



Production network

[Domestic plants] Komaki Plant / Kasugai Plant / Inuyama Plant / Yokkaichi Plant / Tohoku Plant / CKD Shikoku Seikou Corporation / CKD NIKKI DENSO CO., LTD.

[Overseas plants] China Plant / Thailand Plant / South Korea Plant / Malaysia Plant / Indonesia Plant

Overseas sales network

North America and Latin America

CKD USA CORPORATION
Chicago Headquarters
Lexington Office
San Jose Office and Technical Center
San Antonio Office
Detroit Office
Boston Office

CKD MEXICO, S. DE R.L. DE C.V.

Europe

CKD Europe B.V.
Netherlands Headquarters
Germany Office
Czech Office
UK Office
CKD Corporation
Europe Branch

Asia

M-CKD PRECISION SDN. BHD.
Shah Alam Head Office
Johor Bahru Branch Office
Penang Branch Office

CKD THAI CORPORATION LTD.
Bangkok Headquarters
Rayong Office
Navanakorn Office
Eastern Seaboard Office
Lamphun Office
Korat Office
Amatanakorn Office
Prachinburi Office
Saraburi Office

CKD SINGAPORE PTE. LTD.
(Singapore)
CKD CORPORATION BRANCH OFFICE
(Asia Pacific)

CKD India Private Limited
(Gurgaon)
Bangalore Office
Pune Office

PT CKD TRADING INDONESIA
(Jakarta)
Bekasi Office
Karawang Office
Surabaya Office

CKD VIETNAM ENGINEERING CO., LTD.
Headquarters (Hanoi)
Ho Chi Minh Office

CKD Korea Corporation
Seoul Headquarters
Suwon Office
Cheonan Office
Ulsan Office

Taiwan CKD Corporation
Taipei Headquarters
Hsinchu Office
Taichung Office
Tainan Office
Kaohsiung Office

CKD (Shanghai) Corporation

Shanghai Headquarters
Shanghai Puxi Office
Shanghai Pudong Office
Ningbo Office
Hangzhou Office
Wuxi Office
Kunshan Office
Suzhou Office
Nanjing Office
Hefei Office
Chengdu Office
Wuhan Office
Zhengzhou Office
Changsha Office
Chongqing Office
Xian Office
Guangzhou Office
Zhongshan Office

Shenzhen West Office
Shenzhen East Office
Dongguan Office
Xiamen Office
Fuzhou Office
Shenyang Office
Changchun Office
Dalian Office
Beijing Office
Tianjin Office
Qingdao Office
Weifang Office
Jinan Office
Yantai Office

Maintenance and support network

Support bases in Japan and overseas are being developed for the automated machinery and components products. Our knowledgeable staff will respond to your maintenance and various enquiries quickly.

Inventory and local procurement

We manufacture products to local market needs. Since there is an inventory center in each area, a system is in place for us to provide what customers want on a timely basis.

CKD's technology active in the world

CKD's technology, which has penetrated society and proven itself beneficial in all fields, is helping to build an affluent society and create a new era.



Convenience in our everyday lives

Fluid control components

CKD's technology for controlling virtually any type of fluid is active in various fields such as park sprinkler systems, machine tools, etc., and is making people's lives more convenient.



Manufacturing (Monozukuri)

Electric actuators / Pneumatic cylinders

Also included in CKD products are automotive, daily necessities, processes where things are made. They are used for pneumatically operated doors on trains.



Electronics

Fluid control components for semiconductors

Semi-conductors and liquid crystals are used in electronic devices such as data center servers, tablet devices, etc. CKD's fluid control components are actively used in the clean environments for manufacturing them.



IT

Three-dimensional solder paste inspection machines

CKD's technology that never misses defects in printed circuit board manufacturing of smartphones, contribute to high functionality and miniaturization of electronic components.



Food safety

Automated food packaging systems / Food manufacturing components

An increasing number of foods are being packaged to improve added-values such as maintenance of food quality and hygienic conditions. CKD's food packaging technology ensures food safety and provides people with a peace of mind.



Environment

Fluid control devices for solar cells

Solar cells are being introduced in various fields to convert to sustainable energy. CKD's products are adopted in the solar cell manufacturing process.



Medical and healthcare

Pharmaceutical packaging systems / Life science components

CKD's technologies are applied to the pharmaceutical and medical machines supporting safe medical care such as drug and syringe packaging machines, oxygen concentrators, analytical devices and dental instrument control.



Energy

Lithium-ion battery manufacturing machines / Battery manufacturing components

Lithium-ion batteries are used for hybrid and electric vehicles, and their applications are increasing. CKD's technology is used to manufacture lithium-ion batteries.



Automatic packaging systems

Pharmaceutical and medical

Contribute to safe medical care with more than 50 years of achievements and know-how.

We have a wide range of cutting-edge machines for automated packaging processes for medical and pharmaceutical products. In fact, we have the top market share in Japan. We meet user needs for energy- and resource-savings, and fully unmanned packaging processes with quality control using our proprietary inline automated inspection system.



Pharmaceutical products packaging machine, Eco Blister FBP-600E4/E4S



Pharmaceutical products packaging machine, Eco Blister FBP-320E



Packaged drugs



Packaged drugs



Foreign particle inspection machine for tablets, Flash Puri FP630



Food packaging machine, Eco Blister CFF-350E



Food packaging

Food

Food packaging machines pursuing food safety as human safety

Making use of blister packaging machine-specific technologies, the CFF series has pursued cost advantages and improved quality stability. This series offers high performance sealing, safety, hygiene and operability. In addition, these machines conserve resources by minimizing waste from packaging materials including upper lids and container films.

Automatic machinery

We develop and provide automated machineries that meet customer needs based on our best-in-the-industry achievements.

Winding machines for lithium-ion batteries

We ensure the safety of batteries with high-precision windings and contamination countermeasures.

These automated machines manufacture cores of lithium-ion batteries at high speeds and high precision. With the integration of our servo control technology that we have improved over the years and our proprietary technology for pneumatic components and cam technology, we guarantee the quality and safety of batteries.



Winding machines for lithium-ion batteries

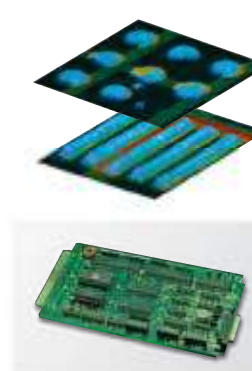


VP9000

3D solder paste inspection machines

Supporting miniaturization and high densification of electronic components.

With our proprietary 3D inspection technology and high-speed inspection which is top-class in the industry, these machines accurately measure the volume and height of the solder paste, and while reducing the defect rate of printed circuit boards, miniaturization and high density are promoted. They are highly evaluated for their high inspection accuracy and user-friendliness.



Maintenance system

Provide finely tuned maintenance services to optimize the operation of machines

Specialized in the maintenance of automatic machines, the "CKD Field Engineering Corporation" supports safe and secure operations. Professional engineers provide total solution services from regular maintenance to repairs and improvement proposals.





Chemical liquid valves



Control components for process gases

Vacuum components

Fluid control components

Our fluid control technology has been successfully applied in wide range of fields.

We are developing units and systems to effectively use liquids, by taking advantage of CKD's pillar fluid control technologies. Under the concept of high quality and wide variation, we have launched a broad range of products from various types of valves, precipitator control systems and environmental products such as water treatment systems.



Medical analysis-specific valves



Flow rate sensors for water

Water catchment units

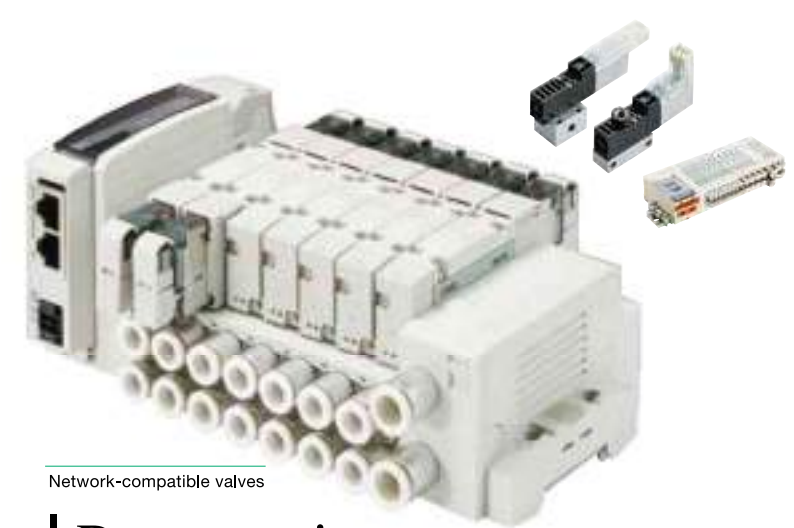
Explosion-proof 2, 3-port solenoid valves

Direct acting 2, 3-port valves

Gas combustion valves

Solenoid valves for automatic sprinklers

Pilot operated 2-port valves



Network-compatible valves

Pneumatic control components

Promote automation by making full use of pneumatic technology.

These units control airflow, for example, the driving of a control valve cylinder. We develop automated systems responding to a broad range of industrial needs and propose pneumatic technologies in consideration of environmental preservation and energy conservation.

Component products

We have a wide array of component products to respond to customer demands and needs for quality, fluid control and automation.

Drive components

Support the automation of industrial systems.

Pneumatic cylinders are used in a wide range of industrial fields because they can be easily automated at low costs. Electric actuators and direct drive motors can readily achieve flexible operation and enable mass customization of production equipment. We support the world's manufacturing with a wide range of products from pneumatic actuators to cams, electric actuators and robots.



Pneumatic cylinders



Assistive devices

Electric actuators



T DISC
(CKD NIKKI DENSO CO., LTD.)



ABSODEX



SCARA robots



Index units



F.R.L. units

Pneumatic related components

System peripherals manage the quality of compressed air.

We provide pneumatic system units based on the know-how acquired through the development of pneumatic auxiliary devices including "F.R.L. units."



Flow rate sensor / Flow rate controller



Electro-pneumatic regulator

Gas Supply Unit

Nitrogen gas extraction unit

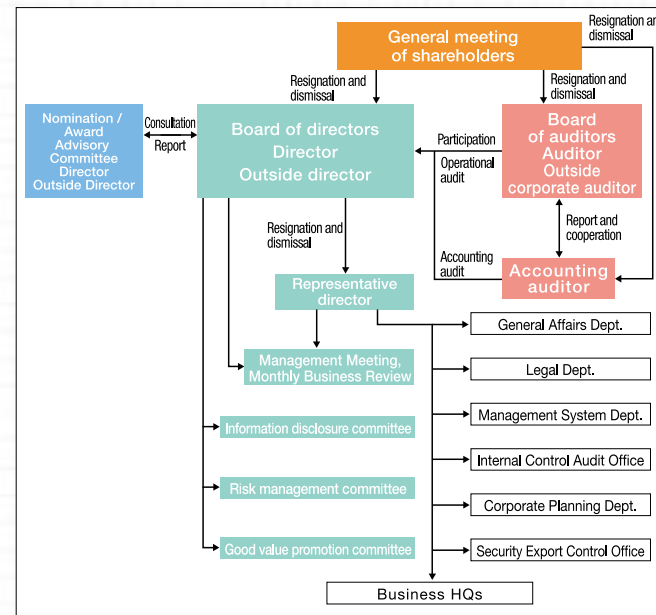
CKD builds relationships of trust with stakeholders through various activities and contributes to the future society by making the most of technologies and know-how we have acquired over the years, in order to continue to grow together.

Corporate governance

To be a company that stakeholders feel good about and trust, we have enhanced corporate governance into a mechanism that ensures healthy and efficient management and improves transparency.

Compliance

Through the execution of duties in accordance with the laws and the Articles of Incorporation, we ensure social responsibility and embody our Corporate Philosophy. We define the “Awareness of Social Responsibilities” as a Corporate Commitment. We have in place Standards of Conduct and thoroughly communicate both of these principles to keep everyone informed. With regards to compliance, security export control regulations and illegal activities report regulations are in place. We also systematically educate employees about compliance via training programs designed by role, grade and section.



Corporate governance organization

Environment

As a commitment to managing the impact that our business activities, products and services have on the environment, we assess and continuously improve on it. Also, we annually set an environmental policy and make it known to employees and all companies concerned.

We contribute to the conservation of the global environment not only by complying with laws and regulations but also by providing environmental-friendly products that make use of the technologies we have obtained over the years.

Low environmental load products

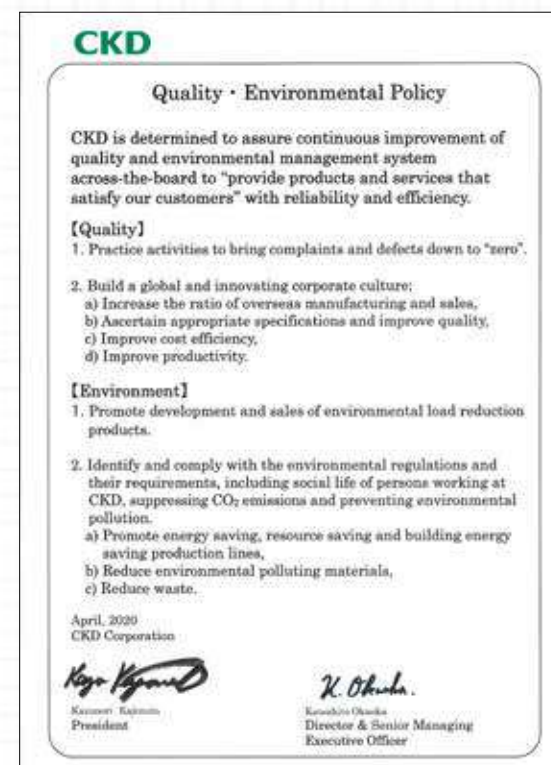
We develop eco-friendly products by using our unique “Environmental Acceptability Assessment Form” to intentionally incorporate environmental targets into the product planning and development stage, and create more environmental-friendly products.

*Assess the environmental level of four environmental items - “Energy conservation”, “Resource conservation”, “Waste” and “Environmental pollution” - from the perspectives of both the “Customer’s environment” and our own “Internal environment.”



Green procurement

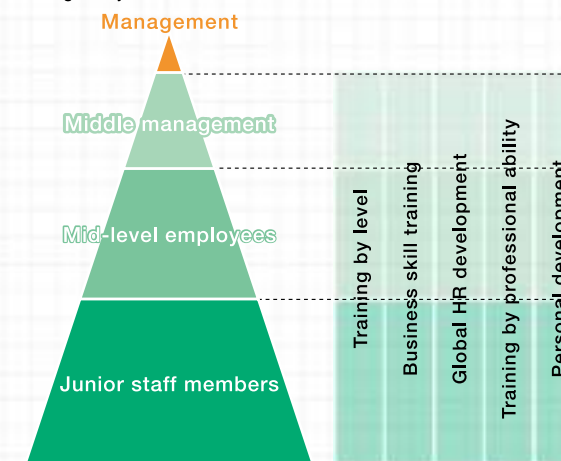
We care for the environment even in the procurement stage. We preferentially purchase products from suppliers of a higher green procurement level.



Human resource development

The Company has a “human resources-oriented corporate culture” as one of its management principles, and positions “human resources” as “talented personnel” since they are important management resources for the sustainable development and growth of a company.

With employee skills development as one of the most important themes for management, we are aiming to develop human resources who can provide better valued products and services to our customers while expanding our business globally.



Promotion of work-life balance

We believe that when both work and family life are fulfilled, employees can realize an engaging workplace for themselves. Therefore, we are taking various measures to achieving them.

Promotion of diversity

We promote diversity by making the most of a wide range of human resources regardless of gender, nationality, or age.

Promotion of health management

The Company regards the health of our employees as one of the most important management issues, and we will continue to raise employees' health awareness and create a workplace where they can work in good physical and mental health.

Occupational health and safety

Aiming for zero accidents, the Company will continue to engage in safety and health activities with the participation of all employees and build a safety-first corporate culture.

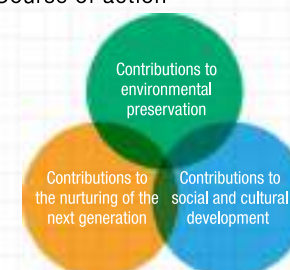
Social contributions

Basic policy on social contributions

As a good corporate citizen, we value social engagement, promote social contribution activities and play our part in creating an affluent society.

(Based on the Corporate Philosophy, Corporate Commitment and Standards of Conduct)

Course of action



CKD's forestation activities



Science class for learning from Manufacturing (Monozukuri)



Cleanup activities

Corporate Information

Corporate profile

Establishment : April 2, 1943
Paid-in Capital : 11,016 million yen
Number of employees : 4,470 personnel (As of March 31, 2020)
Annual sales : 100 billion 700 million yen (As of March 31, 2020)
Listed on : First Section of Tokyo Stock Exchange and Nagoya Stock Exchange
Line of business : Development, manufacturing, sales, and export of functional equipment such as automatic machinery, and components such as drive units, pneumatic control, pneumatic related and fluid control

Board of Directors [As of June 19, 2020]

President	Kazunori Kajimoto	Technical Fellow	Tatsuya Nishio
Director and Senior Managing Executive Officer		Executive Officer	Yoshinori Nozawa
	Katsuhito Okuoka	Executive Officer	Takuya Takahashi
Director and Executive Officer	Shinji Yuhara	Executive Officer	Katsuhiro Niidera
Director and Executive Officer	Katsunori Hayashida	Executive Officer	Kazuhide Okada
Director	Junichi Kagawa	Executive Officer	Shigeru Kawamura
Director	Noriko Asai	Executive Officer	Yoshiaki Kitahora
Director	Kazumasa Uemura	Executive Officer	Yoshiyuki Amano
Standing Auditor	Masafumi Kokubo		
Auditor	Koichi Hayashi		
Auditor	Takeshi Sawaizumi		
Auditor	Shuzo Hashimoto		

History

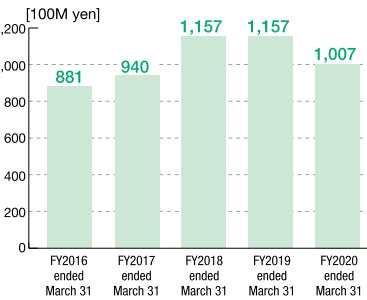
April	1943	Established "Japan Aircraft Electric Co., Ltd." in Nagoya City with 10 million yen in capital. Started the manufacturing and sales of electrical components for aircraft.
October	1945	Renamed the company "Chukyo Electric Co., Ltd.", and began the manufacture, sales and repair of electrical machinery and equipment.
May	1947	Started manufacturing vacuum tube appliances.
December	1956	Established the Component Division in addition to the Machinery Division. Started the mass-production of various types of solenoids, pneumatic cylinders and valves.
June	1961	Relocated to Komaki City after constructing a new plant.
October	1962	Listed the company on the second section of Nagoya Stock Exchange.
February	1971	Listed the company on the first section of Nagoya Stock Exchange.
July	1979	Renamed the company "CKD Corporation."
November	1979	Listed the company on the first section of Tokyo Stock Exchange.
August	1984	Established "M-CKD PRECISION SDN. BHD." in Malaysia.
October	1985	Established "CKD USA CORPORATION" in Illinois, USA.
June	1987	Established the "Wuxi Pneumatic Research Institute, CKD Pneumatic Technical Training Center" in China.
May	1988	Established "CKD THAI CORPORATION LTD." in Thailand.
June	1989	Established "CKD SINGAPORE PTE. LTD" in Singapore.
October	1995	Defined the new corporate statement, logo, color and communication name.
January	2000	Merged "CKD Controls Ltd."
October	2000	Merged CKD Seiki Ltd. and CKD Precision Ltd.
October	2001	Established "CKD (Shanghai) Corporation" in China.
August	2002	Established "CKD Korea Corporation" in South Korea.
January	2003	Merged domestic sales subsidiaries.
		Established "CKD (China) Corporation" in China.
December	2003	Opened a branch office in the Netherlands.
April	2007	Established "Taiwan CKD Corporation" in Taiwan.
	2011	Opened a branch office in Singapore.
July	2012	Renamed the company "CKD Corporation."
November	2012	Established "CKD Field Engineering Corporation" in Japan
October	2013	Built a new plant for "CKD (China) Corporation" in China.
May	2014	Established "PT CKD TRADING INDONESIA" in Indonesia.
June	2014	Established "CKD VIETNAM ENGINEERING CO., LTD." in Vietnam.
August	2014	Established "PT CKD MANUFACTURING INDONESIA" in Indonesia.
March	2015	Established "CKD MEXICO, S. de R.L. de C.V." in Mexico.
December	2015	Established "CKD India Private Limited" in India.
November	2016	Established "CKD Europe B.V." in the Netherlands.
April	2017	"NIKKI DENSO CO., LTD." became CKD's affiliated companies to become CKD NIKKI DENSO CO., LTD.
April	2018	Commenced the operation of "Ohana nursery school", an on-site day-care center in Japan Headquarters / Komaki Plant.
January	2019	Completed the Tohoku plant in Ohira-mura, Kurokawa-gun, Miyagi Prefecture.

Major shareholders [As of March 31, 2020]

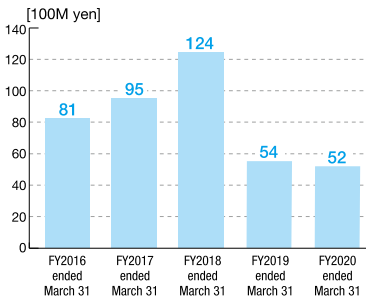
The Master Trust Bank of Japan, Ltd. (Trust account)	Sumitomo Mitsui Banking Corporation
Japan Trustee Services Bank, Ltd. (Trust account)	The Dai-ichi Life Insurance Company, Limited
CKD Shareholding Association	Japan Trustee Services Bank, Ltd. (Trust account5)
SUMITOMO LIFE INSURANCE COMPANY	Credit Suisse Group AG
CKD Corporative Companies Investment Association	Mitsui Sumitomo Insurance Company, Limited

Consolidated results

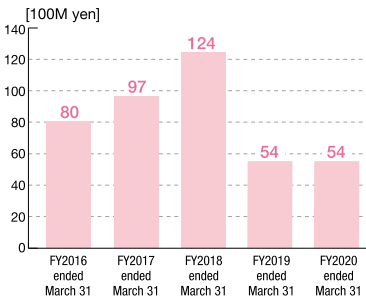
>> Sales



>> Operating income



>> Ordinary income



Domestic sales network

East Japan Branch

Automatic Machinery

Tokyo Sales Dept.

Component Products

[Eastern District Sales Dept.]

Sendai Sales Office
Koriyama Branch Office
Yamagata Sales Office
Kitagami Sales Office
Ota Sales Office
Utsunomiya Sales Office

[Tokyo Sales Dept.]

Tokyo Sales Office
Sapporo Branch Office
Tachikawa Sales Office
Chiba Sales Office
Ibaraki Sales Office
Saitama Sales Office
Nagaoka Sales Office

[Minami-Kanto Sales Dept.]

Yokohama Sales Office
Atsugi Sales Office
Kofu Sales Office

Central Japan Branch

Automatic Machinery

Nagoya Sales Dept.

Component Products

[Nagoya Sales Dept.]

Komaki Sales Office
Nagoya Sales Office
Yokkaichi Sales Office
Matsumoto Sales Office
Kanazawa Sales Office
Toyama Sales Office

[Tokai Sales Dept.]

Toyota Sales Office
Mikawa Sales Office
Hamamatsu Sales Office
Shizuoka Sales Office

West Japan Branch

Automatic Machinery

Osaka Sales Dept.

Component Products

[Osaka Sales Dept.]

Osaka Sales Office
Osakahigashi Sales Office
Nara Sales Office
Kyoto Sales Office
Kobe Sales Office
Shiga Sales Office

[Western District Sales Dept.]

Hiroshima Sales Office
Matsuyama Sales Office
Yamaguchi Sales Office
Okayama Sales Office
Takamatsu Sales Office
Kumamoto Sales Office
Fukuoka Sales Office
Kitakyushu Sales Office

Affiliated Companies

CKD Global Service Ltd.
CKD Field Engineering Corporation
CKD Shikoku Seikou Corporation
CKD NIKKI DENSO CO., LTD.



CKD Corporation

250, Uji 2-chome, Komaki, Aichi, 485-8551, Japan

Phone: +81-568-77-1111 Fax: +81-568-77-1123

URL: <https://www.ckd.co.jp/english/>

